



# *Palm Harbor Museum*

OPERATED BY THE PALM HARBOR HISTORICAL SOCIETY

## NEWS & EVENTS

### GARDEN TEA PARTY—MARCH 5, 2022



The Palm Harbor Historical Society presents a day of pampered old-fashioned luxury at its Tea on Sat, March 5, with two seatings to choose from: morning tea at 11:30 am or afternoon tea at 2:30 pm. An array of delectable sweet and savory treats along with a variety of teas will be served. Guests will enjoy the elegance of tastefully decorated tables set with classic china.

The Palm Harbor Museum back patio provides an outdoor charm in a historic garden setting. In addition to experiencing fine homemade catered food and a selection of tea, guests will receive a party favor. All are invited to dress in their best attire. Two gifts will be given for the most

“Beautiful” and “Original” ladies hats. A variety of silent auction items will be on display including beautifully filled gift baskets. Tours of the Museum are available.

Garden Party Tea tickets are \$35 per person. Tickets sell out quickly and space is limited. Sponsor a whole table for guaranteed seating with friends: \$150 reserves a table for four; \$220 reserves a table for 6. Custom table decorations are available to honor your special person or tribute (for a suggested \$100 donation). As we have limited seating, advance reservations are required. [Tickets](#)

Please stop by the Palm Harbor Museum (the corner of Belcher & Curlew) at 2043 Curlew Rd, Palm Harbor, FL 34683, to purchase your ticket. The Museum is open Thurs-Sat, 10am-2pm. EVENTBRITE online tickets are also available with an additional fee. Please call the Museum (727) 724-3054 for more information.

The Museum is seeking items for the Silent Auction. If you have gift cards, auction items, or other items representing your products or services, please call the Museum to arrange drop off times other than the Museum regular hours 10 to 2 Thursday through Saturday.

The Garden Party Tea will be held outdoors with appropriate physical distancing following current health guidelines.



### ANNUAL MEETING—FEB 16, 6:30 ZOOM

Please join us for our annual membership meeting. There will be an update on museum activities and exhibits, financial and budget reports and an election of our Board. If you haven't renewed your membership/sponsorship, please take time to do that now in order to be eligible for this meeting.

## FROM PHHS PRESIDENT BOB



Dear PHHS Members and Friends of the Palm Harbor Museum,

2022 is proving to be an inspiring and exciting year for the PHM, housed in the Hartley House. Please take the time to learn about all the things happening here, consider supporting these projects financially and renew your membership/sponsorship.

### What's "new" at your Museum?

"Environmental Alterations: A Land Worth More Than Remembering" and "Revealing African American Contributions in North Pinellas" are two newly researched and created exhibits that must be seen to be appreciated. An Oral History, "One Voice, Many Stories" can be viewed in the Hartley Parlor. These important projects were accomplished due to grant support from the Faith Mission Fund of the Pinellas Community Foundation.

~ Bob

## Meet Me At the Museum



Joy Katzen Guthrie

Our ongoing Zoom programs continue on the third Wednesdays at 6:30 Joy Katzen-Guthrie hosts these informative and entertaining events. These programs are also placed on the Palm Harbor Museum You-tube channel (see our website <http://palmharbormuseum.com/oralhistory.html>)

**March 16-** "Myrtle's Life on Sutherland Bayou" will honor Women's History Month/Irish American Heritage Month and share rural life on Palm Harbor's waterfront in the 1950-60s.

**April 20** – As Earth Day is April 22nd our program will discuss our outdoor Living Landscape installation, Florida Friendly landscaping, benefits of native plants to nature and people.

**May 18** – To honor Jewish American Heritage Month, this program focuses on how the Palm Harbor community, led by Frank Weaner of Temple Ahavat Shalom, confronted and rallied to renounce the KKK's attempt to establish a headquarters in Palm Harbor in 1978.



Myrtle Scharrer Betz

## Oral Histories On YouTube



Palm Harbor Museum's Oral History Program not only preserves the voices of Palm Harbor's past, it supports additional interpretive features in our exhibits. We are grateful for the citizens of Palm Harbor who want to tell their stories. The interviews are available for viewing on YouTube. Search YouTube under Palm Harbor Museum and Palm Harbor Museum Oral Histories. Email the Museum to inquire about recording an Oral History: [palmharbormuseum@outlook.com](mailto:palmharbormuseum@outlook.com).

# NEW EXHIBITS

Terry Fortner was instrumental in organizing the new exhibits funded by a Pinellas Community Foundation grant. She worked with others to bring the intention, research and design together. The opening for these exhibits on December 19, 2021 is featured in photos on page 4.



## ENVIRONMENTAL EXHIBIT

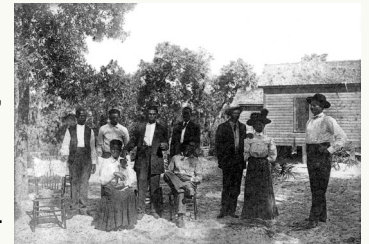
The environmental history exhibit focuses on the First Floridians prior to the Columbian exchange as well as early contacts prior to the 19<sup>th</sup> century. Museum colleagues secured permission to include visual works from Christopher Still and Hermann Trappman, two outstanding artists that vividly portray the natural landscape.

## BLACK HISTORY EXHIBITS

The Black History exhibit allows the museum to address important questions often asked by visitors to Palm Harbor. Terry said "I enjoyed working with others to bring the intention, research and design together. Many people contributed their talents and assistance to create these exhibits."

## "Revealing African American Contributions in North Pinellas"

In designing this exhibit, installed in "The Founders Gallery," we asked a number of interrelated questions: How does the Museum describe the history of a population that has, through customs and traditional residential patterns, not lived within the geographical boundaries of Palm Harbor until the late 20<sup>th</sup> century? Did Palm Harbor meet the definitions of a "sundown town"? If African Americans did not usually live within this area for much of its history, how does the Museum reveal the full measure of their lives, beyond labor they performed in creating the infrastructure, working in the forests, groves and ranches, or performing other tasks? To answer these questions, we researched our Museum's collections, as well as the archives of other newspaper, manuscript, and photographic collections. We talked with individuals who have first-person knowledge of African American history in northern Pinellas County and paid careful attention to biases, interpretations, and common world-views that existed at different times in Florida history.



## LIVING LANDSCAPE

The Palm Harbor Museum grounds will be experiencing exciting improvements in 2022. Trees will be trimmed of dead branches and non-native invasive plants removed. The Museum grounds will be augmented with native plants in areas such as "The Bird Thicket" and "The Pollinator Overlook". Educational interpretive signage will be added to the outdoor public areas. Our museum applied for, and was awarded, MSTU funding from Pinellas County to underwrite project expenses. Nancy McKibben, Assistant to the County Administrator Representing Unincorporated North Pinellas, is our advisor. Dr. Craig Huegel, Author, Botanist, serves as consultant to the project. A steering committee is meeting and if you want to participate in the planting and care of our landscape, we welcome your involvement!

**COMING IN 2022**

**Native Florida Tree & Plant  
Installation**

*Creating a Living Landscape at Palm Harbor Museum!*

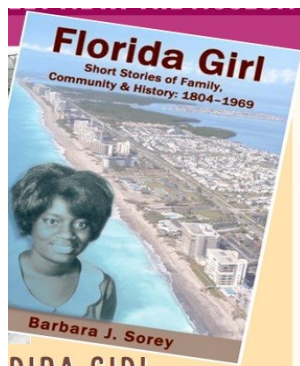




# FAITH MISSION OPENING DEC 19 2021



## Florida Girl Book in the BOOK NOOK!



### WITH BARBARA J. SOREY

In conjunction with the Palm Harbor Museum's newly-opened exhibit, REVEALING AFRICAN AMERICAN CONTRIBUTIONS IN NORTH PINELLAS, author Barbara J. Sorey shares personal stories from her memoirs of a close-knit community of African Americans attempting to survive with love, strength & support in the face of bigotry and prejudice that began with the shackles of slavery and continued into the Civil Rights era of the '60s. In her search of her family history, Sorey discovered the white slave owner of her paternal Great Great Grandfather and traced links to her Great Grandparents. Her stories are part of the legacy of herself, her family, Clearwater, Pinellas County, and the state of Florida.



## Wine Around Palm Harbor Photos



## VOLUNTEERS of the Quarter

Jim Wiesner, Glenda Gunnells, and Deanna Green  
At Wine Around Palm Harbor



Volunteer





# PALM HARBOR HISTORICAL SOCIETY, INC

2043 Curlew Road, Palm Harbor, Florida 34683

Phone: 727-724-3054

palmharbormuseum.com

Email: palmharbormuseum@outlook.com

LIKE US ON FACEBOOK

www.facebook.com/  
Palmharbormuseum



LIKE US ON INSTAGRAM

www.instagram.com/  
Palmharbormuseum



**HOURS: Thurs, Fri and Sat, 10 am to 2 pm**

## THANK SPONSORS



PHM is a proud recipient of support  
awarded by Faith Mission Christian  
Committee/Pinellas  
Community Foundation



AMERICAN RESCUE PLAN GRANT



WITH THE HELP OF



THROUGH FUNDS FROM THE



## MEMBERSHIP

### Membership Application

Without our annual members, PHHS would not be able to run the Museum. 100% of your annual membership is used to support Museum operations. Membership has its perks! Enjoy free admission and programs during the year, exclusive members-only events and 10% off on Book Nook purchases! Individuals and business owners are encouraged to fill out a membership form and mail it in with your check. The Historical Society is a not-for-profit organization. **Annual Memberships expire one year from the date of joining.**

*Encourage your friends to join too! New Members always welcome!*

Name \_\_\_\_\_ Organization (if applicable) \_\_\_\_\_

Address \_\_\_\_\_ City \_\_\_\_\_ St \_\_\_\_\_

Zip \_\_\_\_\_ Phone \_\_\_\_\_ Email \_\_\_\_\_

Annual Membership Dues Categories (check one)

☐ \$30 Individual ☐ \$45 Family ☐ \$100 Sponsor ☐ \$250 Patron ☐ \$500 Benefactor ☐ \$1000 Excelsior ☐ \$2500 Platinum

Membership Dues \$ \_\_\_\_\_ Additional Contribution \_\_\_\_\_

Gift Membership \$ \_\_\_\_\_ From \_\_\_\_\_

Total Amount Enclosed \$ \_\_\_\_\_ Please make check payable to Palm Harbor Historical Society